



2141 ICON Way, Vacaville, CA 95688 - Tel: 707.564.4000 – www.iconaircraft.com

SAFETY DIRECTIVE/ALERT

SD-101419 REV A

DATE ISSUED: 11/27/2019
DATE EFFECTIVE: 11/27/2019
SUPERSEDES NOTICE: SD-101419
SUBJECT: Compliance with Rotax ASB-912 i-011iS
AIRCRAFT AFFECTED: **MODEL:** A5
S/N: 00008,00033,00034,00042,00080-00085,
00088 thru 00116 (inclusive)
REQUIRED ACTION: Inspect fuel pump in compliance with Rotax ASB-912 i-011iS and replace fuel pump if affected.
TIME OF COMPLIANCE: Prior to Next Flight
REVISION HISTORY REV A: Modified Torque under Installation Step 5 from 22 in-lbs to 30-35 in-lbs and added torque for fuel line B-nuts. Altered Option 2 logbook entry.

PURPOSE: ICON is committed to designing, manufacturing, delivering, and supporting a high-quality Light Sport Aircraft providing a level of safety well beyond expectations. Rotax Aircraft Engines has issued an Alert Service Bulletin (ASB) requiring: the inspection of the dual fuel pump assemblies Rotax part number 889697 serial numbers 18.0500 up to 19.2699 (inclusive) and if the fuel pump is affected, replacement of the fuel pump. Rotax issued this bulletin due to a deviation in the manufacturing process of the electric fuel pump where a malfunction of the fuel pump may occur. Possible effects might be rough engine running, unusual operating behavior, and possible power reduction or engine stoppage. As such ICON aircraft is issuing this Safety Directive with a requirement to replace the fuel pump assembly if necessary, prior to next flight.

INSTRUCTIONS:

- 1) Read and comply with the attached Rotax Aircraft Engines Alert Service bulletin ASB-912 i-011iS
- 2) If SD-101419 has already been complied with, then no further action is required. Otherwise, continue with steps 3 and 4.
- 3) If fuel pump is within the affected range of the Rotax Aircraft Engine ASB-912 i-011 replace the fuel pump prior to next flight in accordance with the instructions in the fuel pump replacement section of this Directive.
- 4) If fuel pump is not within the affected range of the Rotax Aircraft Engine ASB-912i-011iS no further action is necessary. Make a logbook entry stating that the fuel pump installed isn't affected by this Safety Directive

METHODS OF DETERMINING THE FUEL PUMP ASSEMBLY SERIAL NUMBER:

The below is a list of some (not all) acceptable ways to determine the serial number of the installed fuel pump assembly:

- 1) Review the Airframe and Engine logbook entries to identify the fuel pump assembly serial number. Cross check this number against the affected list of pumps in ASB-912 i-011iS

SAFETY DIRECTIVE/ALERT**SD-101419 REV A**

- 2) Carefully flex back the left-hand cabin side liner as shown in figures 1 and 2 and visually inspect the fuel pump for a serial number as shown below. Figure 3 may be helpful in determining the location of the pump in the aircraft and figure 6 may be helpful in locating the serial number on the fuel pump assembly

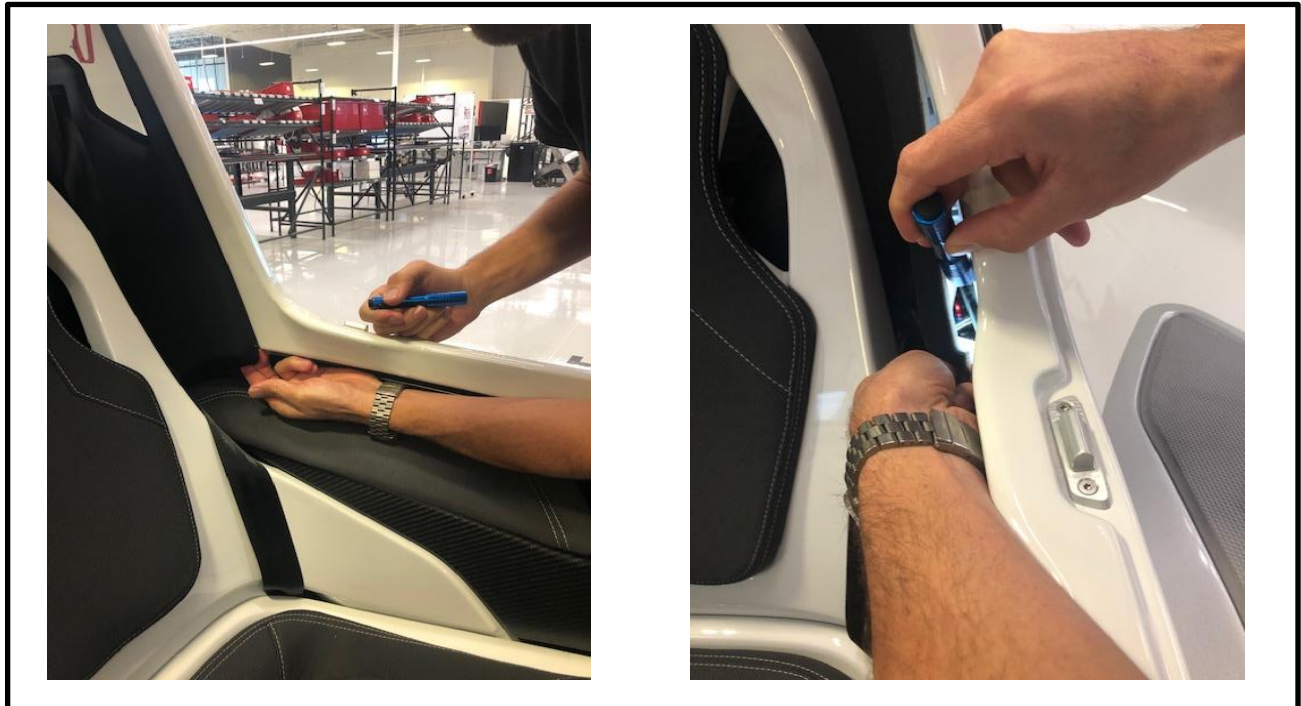


Figure1: Hook the left side cabin liner with fingers as shown and carefully flex liner inboard enough to insert a small flashlight.

SAFETY DIRECTIVE/ALERT

SD-101419 REV A

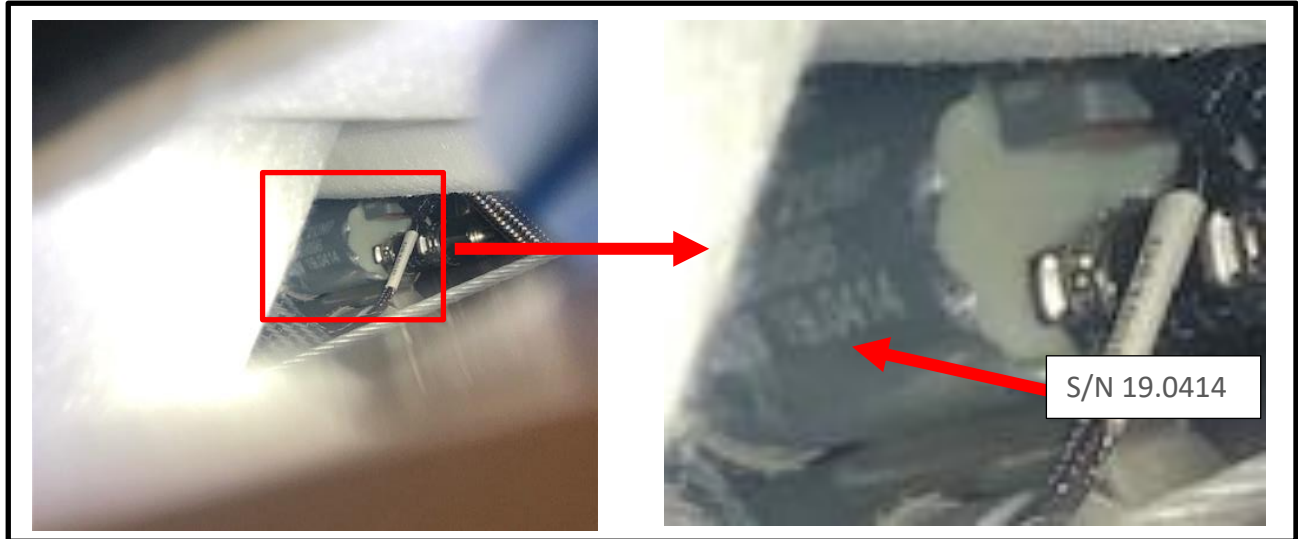


Figure2: Sight down the opening identifying the fuel pump on one of the pump modules as shown.

- 3) Using a borescope insert the camera into the opening of the pilot side lap belt pass through as shown the following figures 3 through 6:

SAFETY DIRECTIVE/ALERT

SD-101419 REV A



Figure 3: Borescope inspection technique through the pilot side lap belt pass through

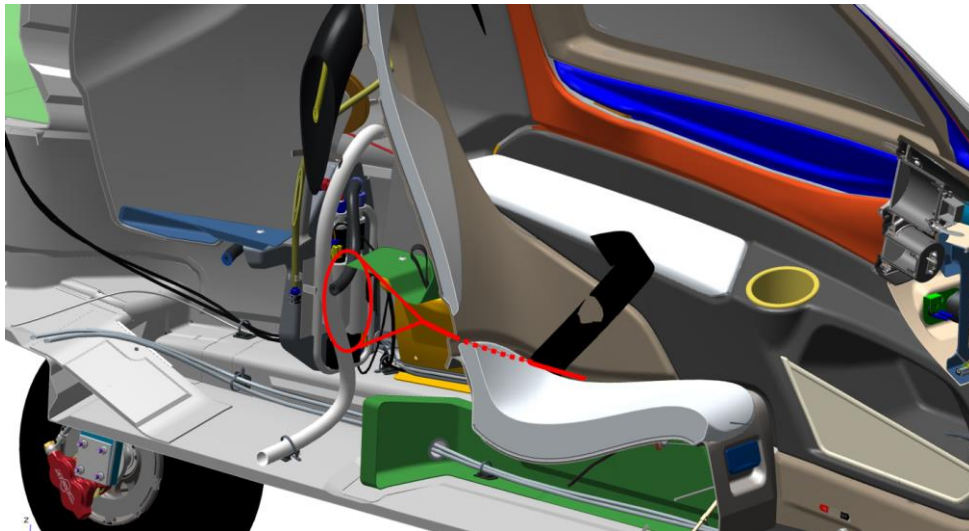


Figure 4: Cut away with parts remove for clarity of the approximate path of the borescope to view the fuel pump serial number

SAFETY DIRECTIVE/ALERT

SD-101419 REV A



Figure 5: View of the borescope screen showing the fuel pump serial number.

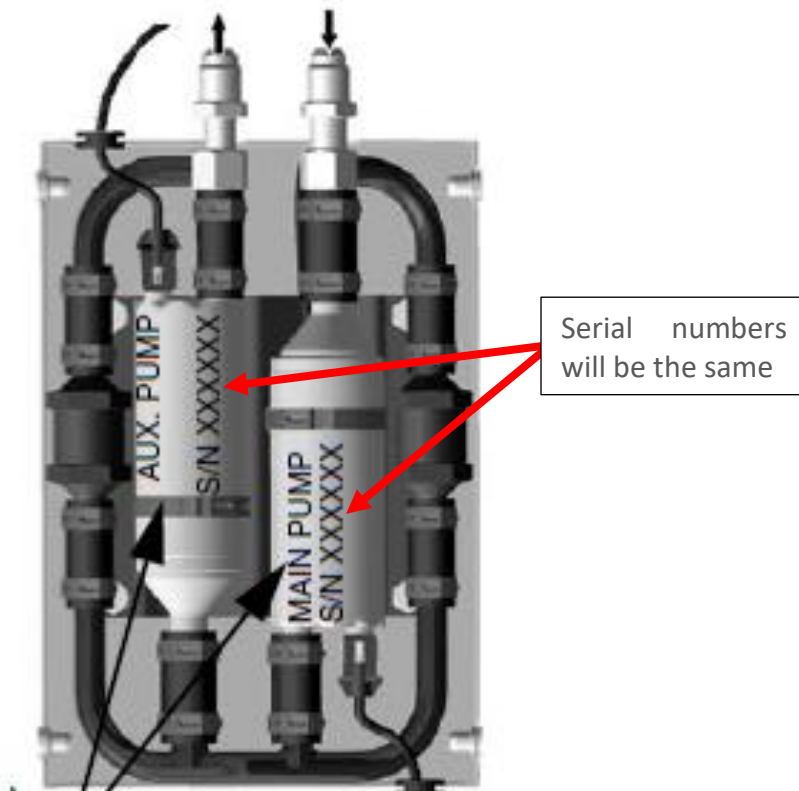


Figure 6: Graphic of approximate location of serial number markings on the fuel pump assembly.



2141 ICON Way, Vacaville, CA 95688 - Tel: 707.564.4000 – www.iconaircraft.com

SAFETY DIRECTIVE/ALERT

SD-101419 REV A

CORRECTIVE ACTION: FUEL PUMP REPLACEMENT INSTRUCTIONS

1. It is permissible to disassemble the aircraft as required to permit accessibility, inspection, adjustment, maintenance, and repair in accordance with the latest release of the Aircraft Maintenance Manual, ICA000833.

NOTE: Before starting repair work on the fuel system, ensure that it is no longer pressurized.

2. Purge all fuel from system.
3. Remove the baggage floors per the maintenance manual (8 Torx fasteners).
4. Remove the seat closeout panel directly behind the pilot seat.
5. Once removed, you will see the fuel pump mounted vertically on the LH side of the aircraft.
6. Lay absorbent materials directly below the pump.
7. There are two electrical connectors for the pump, remove these connectors using a flat head screwdriver.
8. Disconnect and cap the fuel lines attached to the fuel pump.
9. Unbolt and remove the pump.

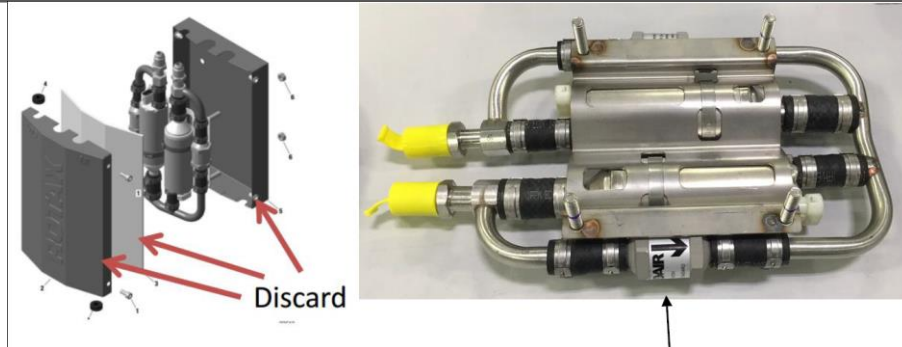
Consumables and bulk materials list:

P/N	Description	Qty
ICA013940	Fuel Pump, Rotax 912ls (Rotax P/N 889636)	1
Torque Stripe	Torque Stripe	As Needed
Loctite 243	Threadlocker, Loctite 243	As Needed
NAS1149C0432R	WASHER, FLAT, CRES, #4X.032, PSVT	4

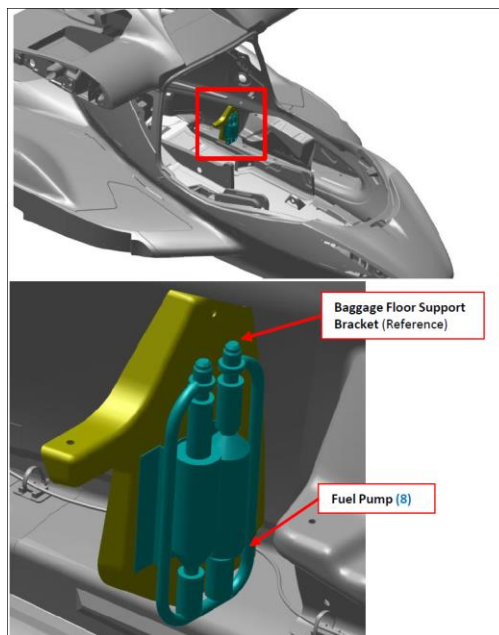
Installation:

NOTE: Document serial number for removed fuel pump and the new fuel pump in the aircraft logbooks

1. If installing a pump that came with housing, disassemble the housing as shown in figure 7 and discard.
2. Remove fuel pump from housing. Save 4x nuts that are provided with the fuel pump as these will be used during the fuel pump installation. Discard the outer casing as shown in figure 7.

SAFETY DIRECTIVE/ALERT**SD-101419 REV A***Figure 7: Fuel Pump from Rotax*

3. Inspect the connectors for proper engagement of the wires to the connector.
4. Install fuel pump onto baggage floor support bracket using hardware supplied with fuel pump as shown in figure 8.

*Figure 8: Fuel Pump Install*

5. Apply Loctite 243 to studs and torque 4x nuts and 4x washers to 30-35 inch-lbs. Apply torque stripe as shown in figure 9.

SAFETY DIRECTIVE/ALERT

SD-101419 REV A

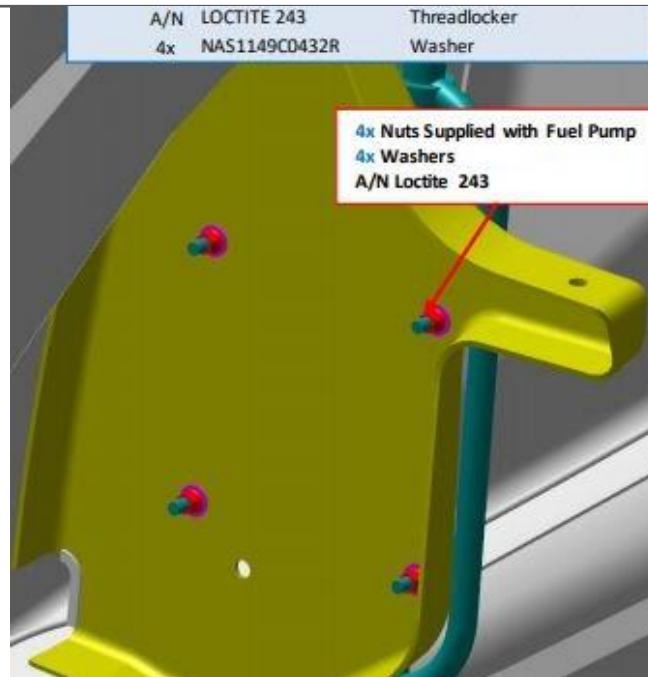


Figure 9: Install washers, nuts and Loctite 243 on to the mount studs

6. Connect fuel lines to the fuel pump. Torque B-nuts to 110-130 in lbs.
7. Connect electrical connectors D9100P to Aux pump (upper) and D9087P to the Main pump (lower).
8. Install seat closeout panel behind the pilot seat.
9. Install the baggage floors.
10. Return the affected fuel pump to ICON Aircraft Service at the address below. Prior to sending, contact ICON Service to receive an RMA number.

Make one of the following logbook entries:

Option 1: Fuel pump serial number was not in the affected range

“Safety Directive/Alert (insert referenced document number) inspection has been complied with and reported to ICON Aircraft Service. Fuel pump assembly part number 889697 serial number _____ was installed and is not within the affected range of Rotax ASB 912i-011”

Option 2: Fuel pump assembly serial number was in the affected range.

“The corrective action of Safety Directive/Alert (insert referenced document number) has been complied with and reported to ICON Aircraft Service. Main and Auxiliary fuel pumps serial number _____ and _____ were replaced with Main and Auxiliary fuel pumps serial number _____ and _____.”



2141 ICON Way, Vacaville, CA 95688 - Tel: 707.564.4000 – www.iconaircraft.com

SAFETY DIRECTIVE/ALERT

SD-101419 REV A

Warranty Information:

- 1) 0.25 hours for inspection without the need to replace the pump.
- 2) 2.0 hours for fuel pump inspection and replacement

If you have questions, comments, or concerns about this Safety Directive/Alert and/or if you are no longer owner/operator of this aircraft, please forward this information to the present owner/operator and notify ICON Aircraft at:

ICON Aircraft
2141 ICON Way
Vacaville, CA 95688
(855) FLY-ICON or (707) 564-4000
ownersupport@iconaircraft.com

Please include the aircraft registration number, serial number, your name, and if known the contact information of the new owner/operator.