



2141 ICON Way, Vacaville, CA 95688 - Tel: 707.564.4000 – www.iconaircraft.com

SAFETY DIRECTIVE/ALERT

SD-040717 REV A

DATE ISSUED: 04/7/2017
DATE EFFECTIVE: 04/7/2017
SUPERSEDES NOTICE: N/A
SUBJECT: Outboard flap control tube rod end replacement
AIRCRAFT AFFECTED: **MODEL:** A5
S/N: 00001 to 00019
REQUIRED ACTION: Replace flap control tube aluminum rod ends with CRES rod ends
TIME OF COMPLIANCE: Aircraft with more than 200 hours time in service - Prior to next flight
Aircraft with less than 200 hours time in service – Next 100 hour inspection

PURPOSE:

ICON is committed to designing, manufacturing, delivering, and supporting a high quality Light Sport Aircraft, providing a level of safety well beyond expectations.

ICON has experienced an anomaly of a rod end component of the A5 flap control system. Although none of these events individually have resulted in a safety of flight issue, ICON believes that these parts should be removed from service and replaced with the improved design.

PARTS LIST:

PART	DESCRIPTION	QTY
59915K272	ROD END, MALE THD, PTFE LINED CRES, .250X.250-28X1.00	4

SAFETY DIRECTIVE/ALERT

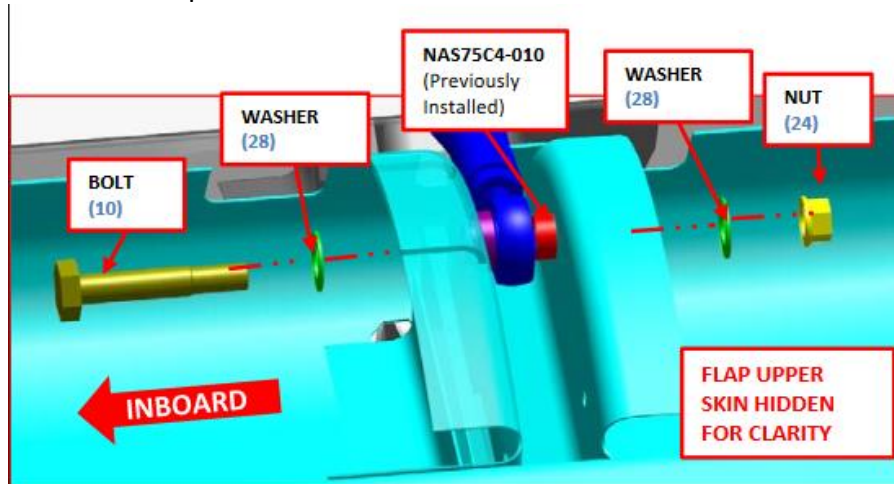
SD-040717 REV A

INSTRUCTIONS:

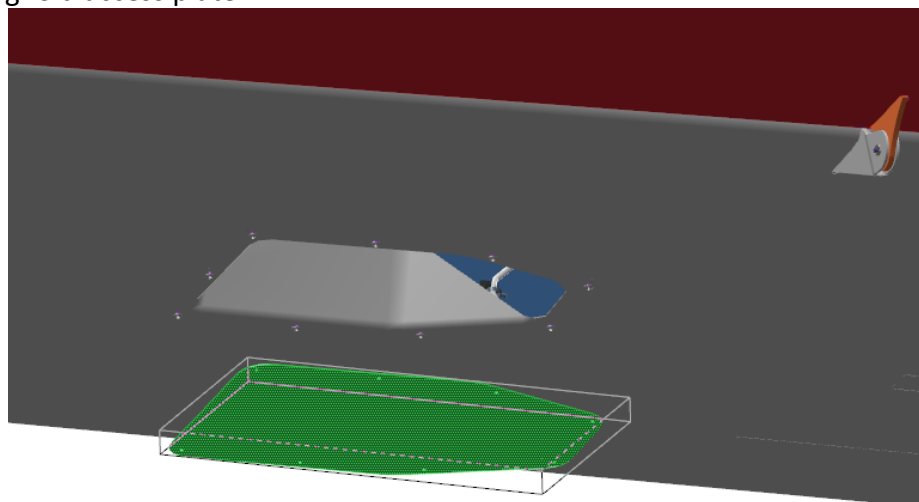
Task Specific Training:

These rod end replacements are to be performed by an ICON Aircraft, Inc. trained mechanic with an Airframe certificate.

1. Disconnect the outboard flap control tube rod ends in accordance with latest maintenance manual.

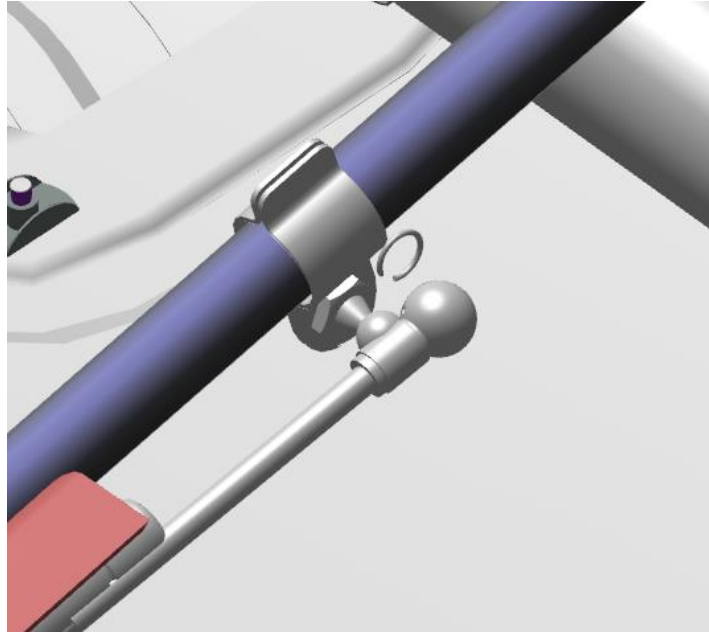


2. Count protruding threads from end of jam nut and document for replacement part.
3. Remove aluminum (red) rodend from this connection and replace with new 59915K272 to the same thread stickout.
4. Reassemble jamnut and fasteners as shown in Step 1. Torque in accordance with maintenance manual.
5. Remove wing fold access plate.

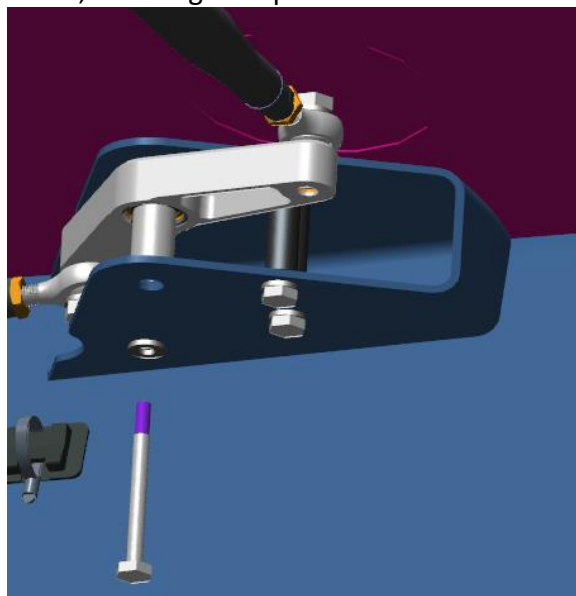


SAFETY DIRECTIVE/ALERT**SD-040717 REV A**

6. Disconnect the flap gas strut from the outboard flap control tube by removing locking clip from gas strut and disconnecting the gas strut from the ball attachment. **WARNING:** It is **CRITICAL** to remove the gas strut prior to removing this connection, damage can occur to the pushrod.

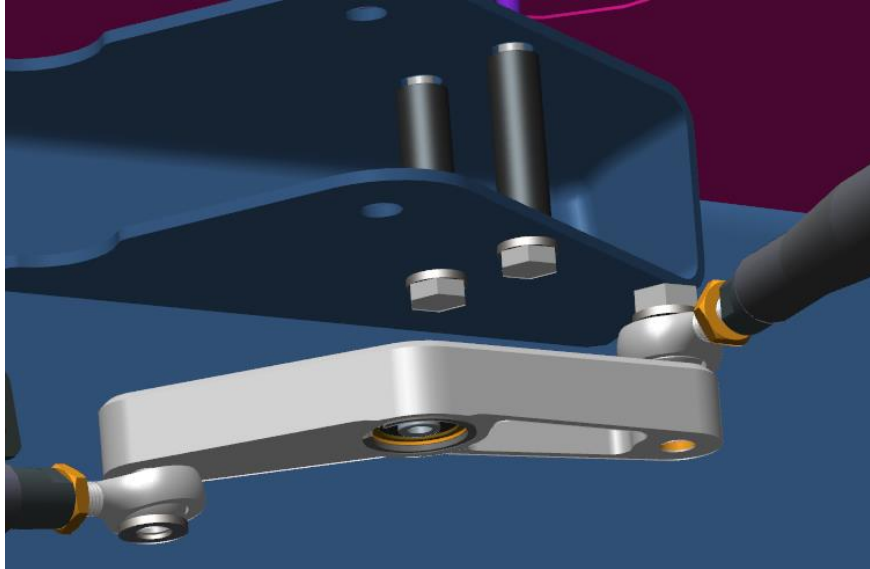


7. Remove bellcrank pivot bolt, ensuring the spacer under the bellcrank is not lost.

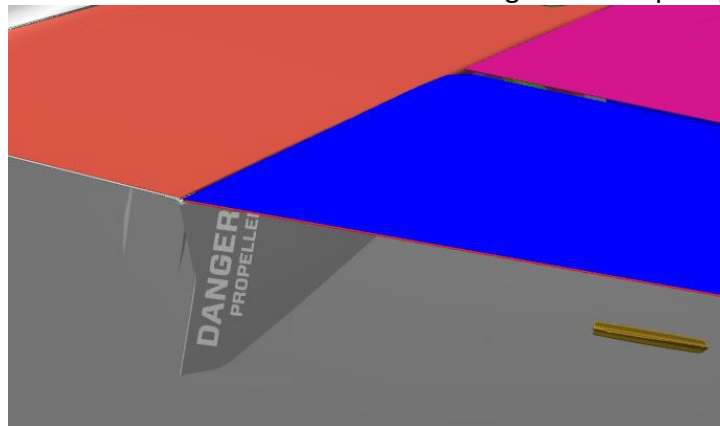


SAFETY DIRECTIVE/ALERT**SD-040717 REV A**

8. Lower bellcrank in order to access the bolt for the FWD rod end,



9. Count protruding threads from end of jam nut and document for replacement part.
10. Remove OTBD aluminum rod end and replace with new 59915K272.
11. Reassemble jamnut and fasteners as shown in Step 8. Torque in accordance with maintenance manual.
12. Reinstall bellcrank into housing as shown in step 7.
13. Reconnect gas strut and locking clip.
14. Once assembled, ensure the flap is aligned with the center wing. If it is not, you will have to untorque disconnect the gas strut, untorque the jamnuts on the pushrod and turn one rod end until alignment has been achieved while the bellcrank is against the up stop.





2141 ICON Way, Vacaville, CA 95688 - Tel: 707.564.4000 – www.iconaircraft.com

SAFETY DIRECTIVE/ALERT

SD-040717 REV A

Make the following logbook entry:

“The corrective action of Safety Directive SD-040717-A has been complied with and reported to ICON Aircraft Owner Support”.

If you need assistance relocating your A5 to your home base or temporary storage arrangements, please contact ICON Aircraft and ask for Owner Support.

If you are no longer owner/operator of this aircraft, please forward this information to the present owner/operator and notify ICON Aircraft, Owners Center at:

ICON Aircraft
2141 ICON Way
Vacaville, CA 95688
(855) FLY-ICON or (707) 564-4000
support@iconaircraft.com

Please include the aircraft registration number, serial number, your name, and if known the contact information of the new owner/operator.



2141 ICON Way, Vacaville, CA 95688 - Tel: 707.564.4000 – www.iconaircraft.com

SAFETY DIRECTIVE/ALERT

SD-040717 REV A

SAFETY DIRECTIVE APPROVAL

NAME	TITLE	DATE
------	-------	------

VP Engineering

NAME	TITLE	DATE
------	-------	------

NAME	TITLE	DATE
------	-------	------

NAME	TITLE	DATE
------	-------	------