



2141 ICON Way, Vacaville, CA 95688 - Tel: 707.564.4000 – www.iconaircraft.com

SERVICE LETTER

SL-050923-A

ID NUMBER & REVISION: SL-050923-A
SUBJECT: Release of Garmin G3X Software 9.22
RELEASE DATE: 2 June 2023
EFFECTIVE DATE: 2 June 2023
SUPERSEDES NOTICE: N/A
AIRCRAFT AFFECTED: **MAKE & MODEL:** A5
SERIAL NUMBERS: 00073, 00139 – 00146, 00148 – 00189
ACTION: Update the Garmin G3X software from currently installed software to Garmin G3X software version 9.22.
TIME OF COMPLIANCE: Before the next flight.
REVISION HISTORY: A Initial Release

LEVEL OF CERTIFICATION ☒ Pilot/Owner ☒ A & P
REQUIRED (any level checked ☒ LSA Repairman – Inspection ☒ Certified Repair Station
can perform task): ☒ LSA Repairman – Maintenance ☒ Manufacturer

PURPOSE:

To ensure continued compatibility between the ICON A5 on board computer system and the Garmin G3X, ICON Aircraft Engineering performs ground and flight testing on each new Garmin G3X software release. This service letter is intended to communicate that the ground and flight testing has been completed. ICON Aircraft has determined that the Garmin G3X software version 9.22 is compatible with the ICON A5 computer system and authorizes the update and use of the 9.22 software. If there are any questions, please contact an ICON Aircraft Customer Advocate.

ASSEMBLIES AND PARTS:

PART NUMBER	DESCRIPTION	QUANTITY	ALTERNATE	
			PART NUMBER	DESCRIPTION
N/A	Garmin G3X Touch Software 9.22	1		
N/A	ICON 1.0 Configuration File	1 (As Required)		

IF APPLICABLE, SERVICE KITS:

KIT NUMBER	CONTENT PARTS	DESCRIPTION	QUANTITY
N/A	N/A	N/A	N/A

INSTRUCTIONS:

For Garmin Software to operate correctly in the ICON A5, a configuration file (ICON 1.0) must also be loaded into the G3X. If the ICON 1.0 configuration file has been previously uploaded to the Garmin G3X, then skip steps 9 through 13.



2141 ICON Way, Vacaville, CA 95688 - Tel: 707.564.4000 – www.iconaircraft.com

SERVICE LETTER

SL-050923-A

NOTE: The file structure is important in the SD card. There should only be one parent folder titled “Garmin” with no other parent folders. In addition, the folder “config” should be inside the parent folder “Garmin”. Only the ICON 1.0 configuration file should be inside the “config” folder.

NOTE: Garmin may, from time to time, release new software versions shortly after the release of the one listed above. In those instances, the software version listed in this service letter will no longer be available on the Garmin download web page. Please refrain from updating the software onto the ICON A5 G3X until the released software from Garmin is validated by ICON Aircraft and a new Service Letter revision is released.

Updating G3X to Garmin Software Version 9.22

1. Download the Garmin software version 9.22 onto an SD card.
 - a. The software can be downloaded [here](#).
 - b. Select: **GDU 4xx Cockpit Display** for your desired operating system.
 - c. Select your inserted SD card as the download location for the software.
 - d. Perform the following steps if the ICON 1.0 configuration file has not been previously loaded.
 - i. Once Garmin software version 9.22 has been downloaded, open the folder titled “Garmin”.
 - ii. Inside “Garmin” folder, create new folder titled “config”.
 - iii. Download ICON 1.0 configuration file and transfer it into the “config” file on the software SD card.

NOTE: The ICON 1.0 configuration file shall be obtained from an authorized ISP or ICON headquarters in Vacaville California.

2. Ensure that aircraft master power is off.
3. Insert the SD card into the SD slot at the bottom of the Garmin G3X Touch display.
 - a. See Figure 1.



2141 ICON Way, Vacaville, CA 95688 - Tel: 707.564.4000 – www.iconaircraft.com

SERVICE LETTER

SL-050923-A

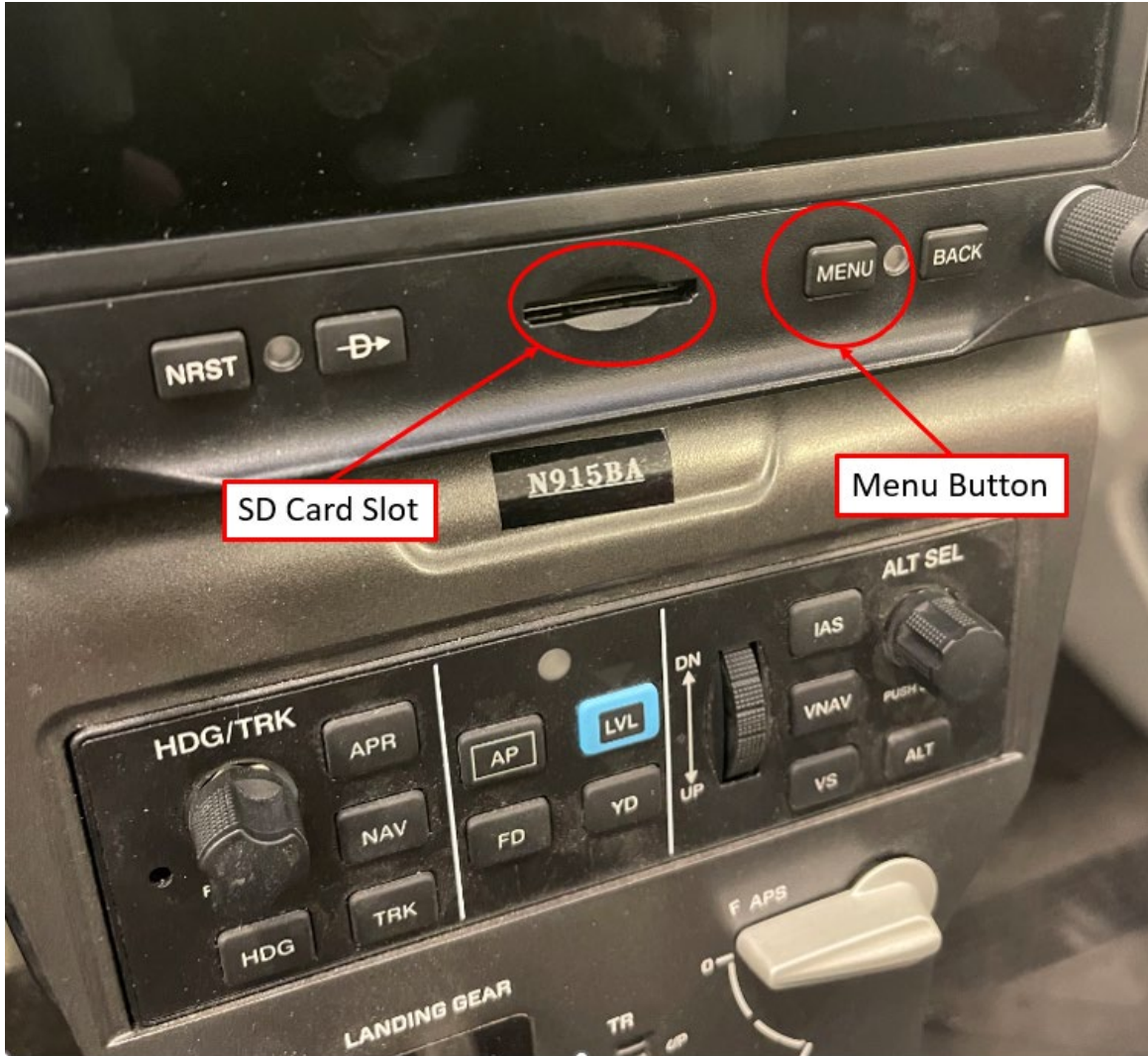


Figure 1 SD Card Slot and Menu Button

4. Turn on the aircraft master power and hold the Menu button to enter Configuration Mode.
 - a. See Figure 1.
5. When "Update Software" windows populates, select "Yes."
 - a. See Figure 2.



2141 ICON Way, Vacaville, CA 95688 - Tel: 707.564.4000 – www.iconaircraft.com

SERVICE LETTER

SL-050923-A

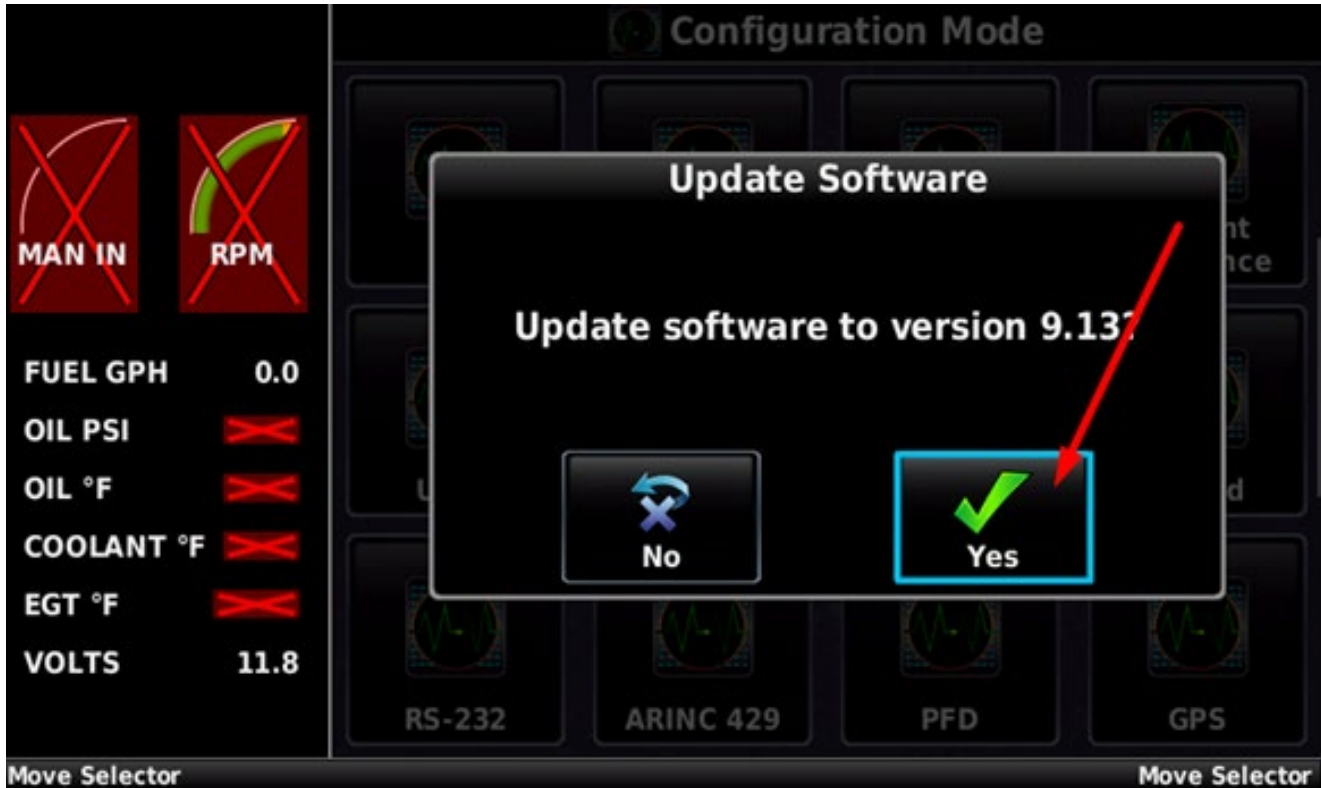


Figure 2 Update Software Screen (version 9.13 shown)

NOTE: Software 9.13 is shown as an example in Figure 2. When downloaded, the latest version will be shown on the update screen on the G3X.

6. The Garmin G3X will automatically update the software.
 - a. DO NOT turn off the aircraft power until the software is fully updated.
 - i. The software is fully updated when the message “Software update in progress- Do not remove power” disappears.
 - ii. This can be found by selecting “Messages” at bottom of screen.
 - b. See Figures 3 and 4.



2141 ICON Way, Vacaville, CA 95688 - Tel: 707.564.4000 – www.iconaircraft.com

SERVICE LETTER

SL-050923-A



Figure 3 Messages

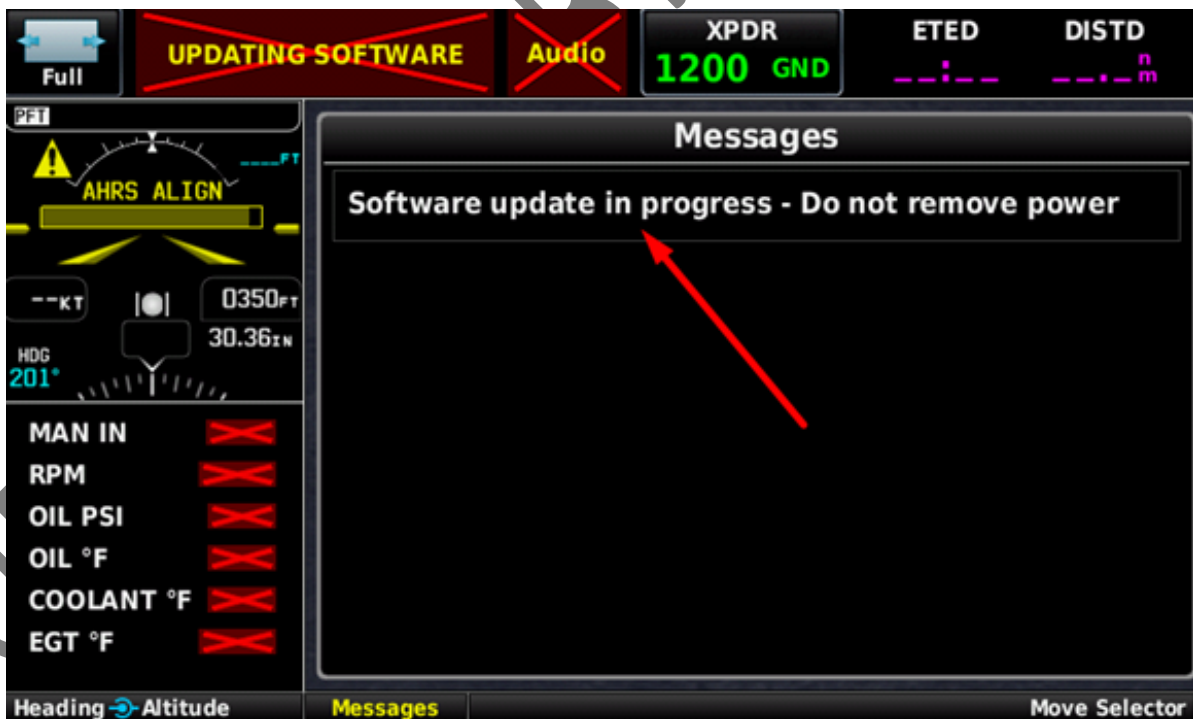


Figure 4 Update Message



2141 ICON Way, Vacaville, CA 95688 - Tel: 707.564.4000 – www.iconaircraft.com

SERVICE LETTER

SL-050923-A

7. The update may last up to 20 minutes.
 - a. It is advised to place the aircraft on an appropriate external power supply during the update process.
8. Once the software is fully updated, reboot the G3X by,
 - a. Simultaneously holding the NRST, MENU, and BACK buttons.
 - b. Once the boot screen appears, hold only the MENU button until the configuration mode screen appears.
 - i. See Figure 5.
9. Once in configuration mode, click “Config Files.”
 - a. See Figure 5.

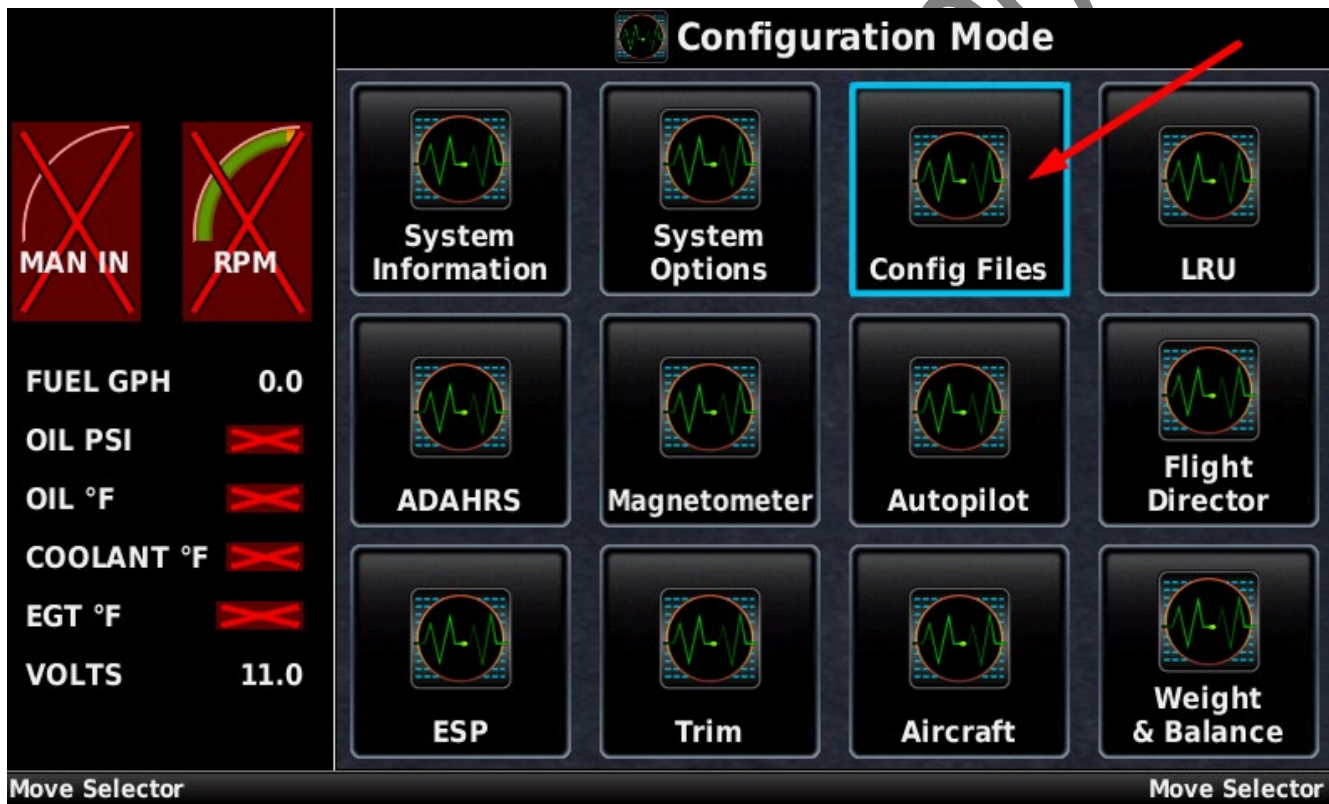


Figure 5 Configuration Mode Screen

10. The configuration file on the SD card will be shown.
 - a. See Figure 6.



2141 ICON Way, Vacaville, CA 95688 - Tel: 707.564.4000 – www.iconaircraft.com

SERVICE LETTER

SL-050923-A

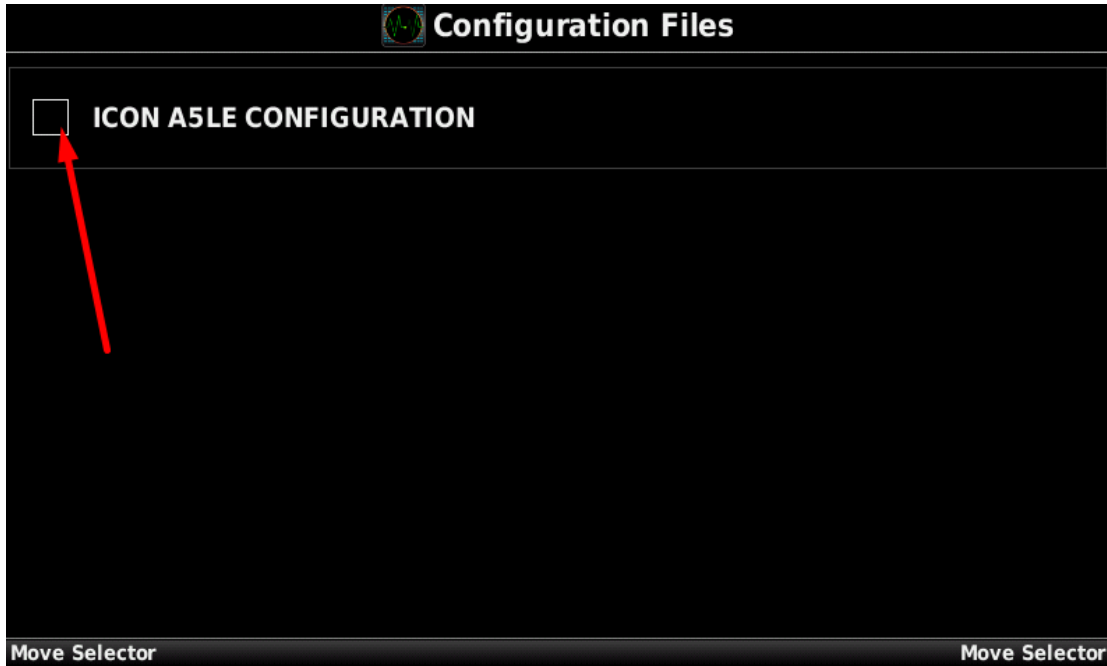


Figure 6 ICON Configuration File

11. Select "ICON A5LE CONFIGURATION."
 - a. A prompt will appear; Select "Yes."
 - b. See Figure 7.

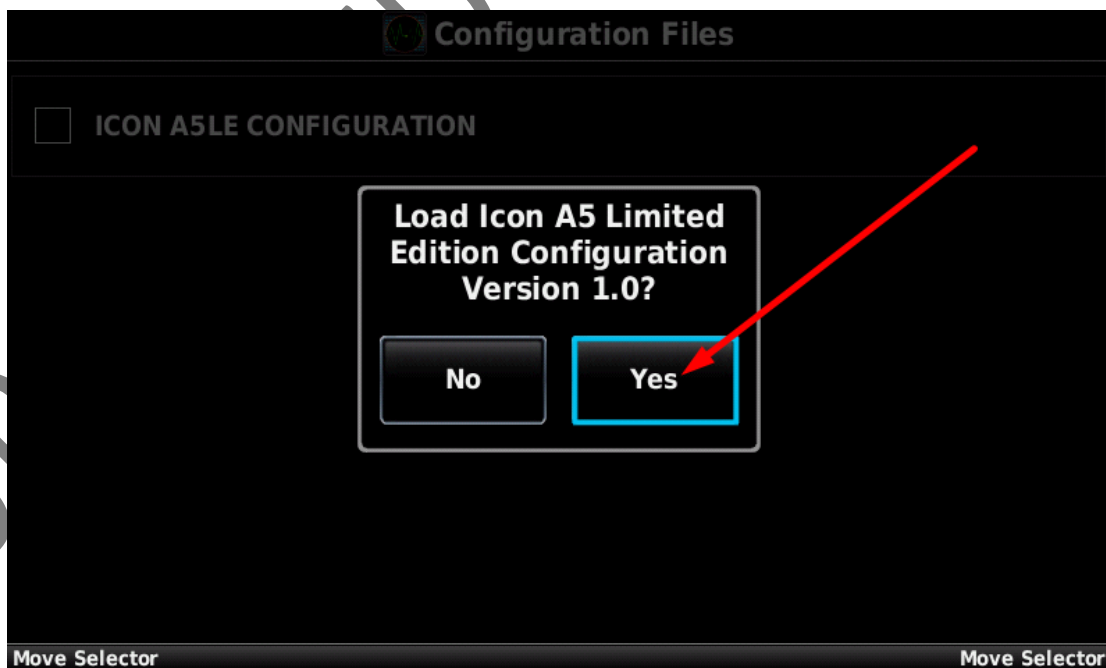


Figure 7 Load Configuration File Prompt



2141 ICON Way, Vacaville, CA 95688 - Tel: 707.564.4000 – www.iconaircraft.com

SERVICE LETTER

SL-050923-A

12. A green check mark will appear showing that the file has been loaded.
 - a. See Figure 8.

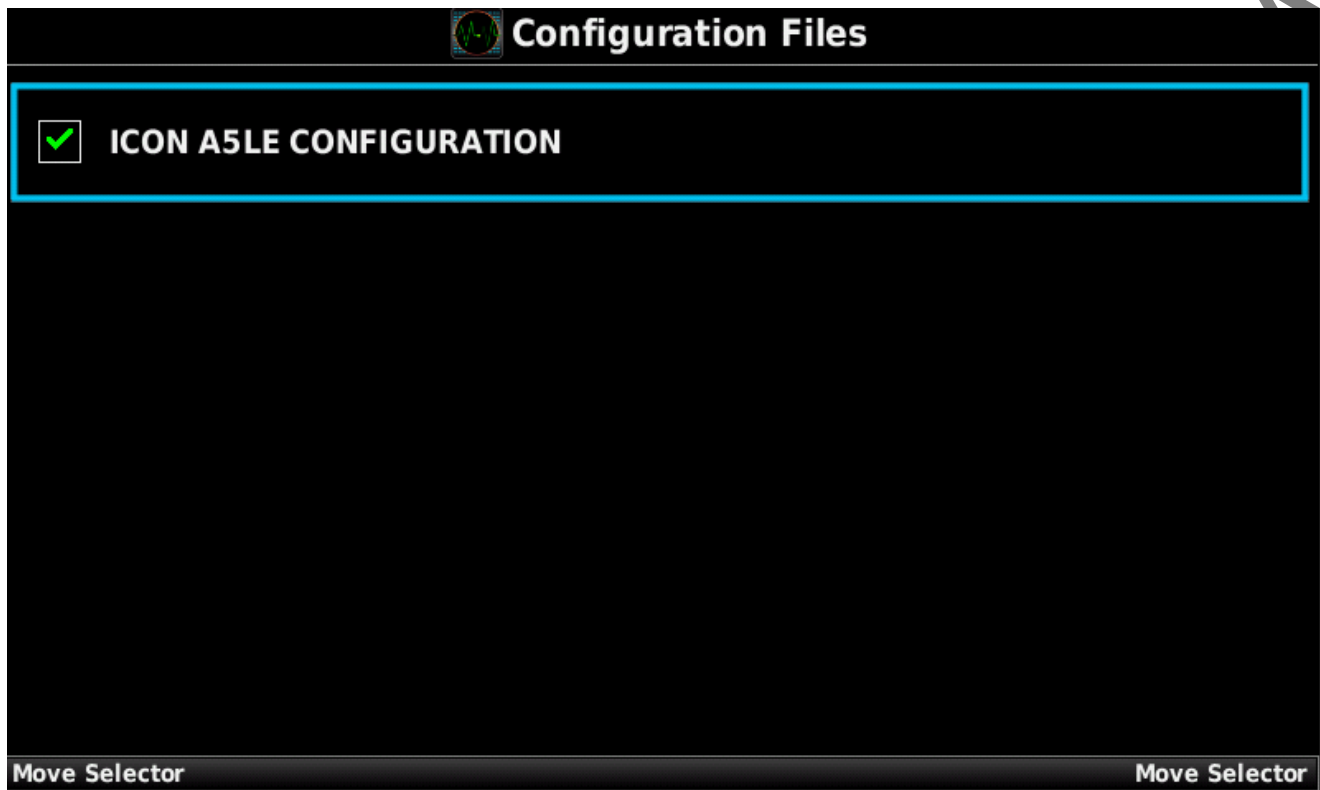


Figure 8 ICON Configuration Loaded

13. Press the BACK button on the G3X touch display.
14. Select "System Information" to verify that the ICON 1.0 configuration file has been loaded.
 - a. See Figure 9.



2141 ICON Way, Vacaville, CA 95688 - Tel: 707.564.4000 – www.iconaircraft.com

SERVICE LETTER

SL-050923-A

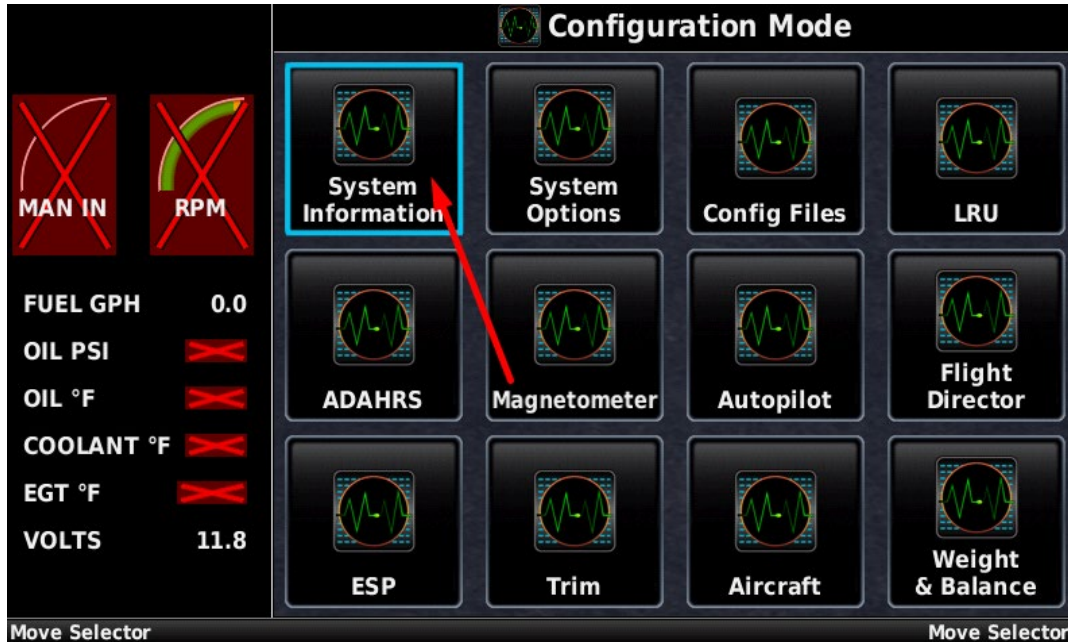


Figure 9 System Information

15. Confirm the Primary Flight Display Config Module indicates “Valid” with a green check mark and Config Version indicates “ICON 1.0.”
 - a. See Figure 10.

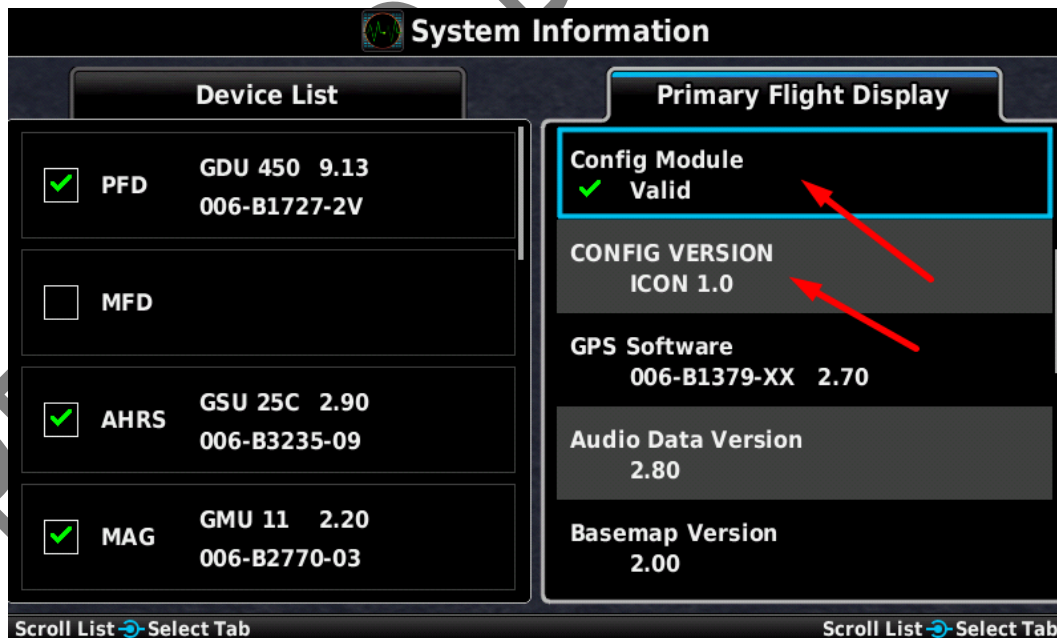


Figure 10 Confirmation of the ICON 1.0 File



2141 ICON Way, Vacaville, CA 95688 - Tel: 707.564.4000 – www.iconaircraft.com

SERVICE LETTER

SL-050923-A

NOTE: Software 9.13 is shown as an example in Figure 10. However, the latest software will populate at that location.

16. Press the BACK button to return to the Configuration Mode page.
17. Select “Transponder” to go to Transponder Configuration page.
 - a. See Figure 11.

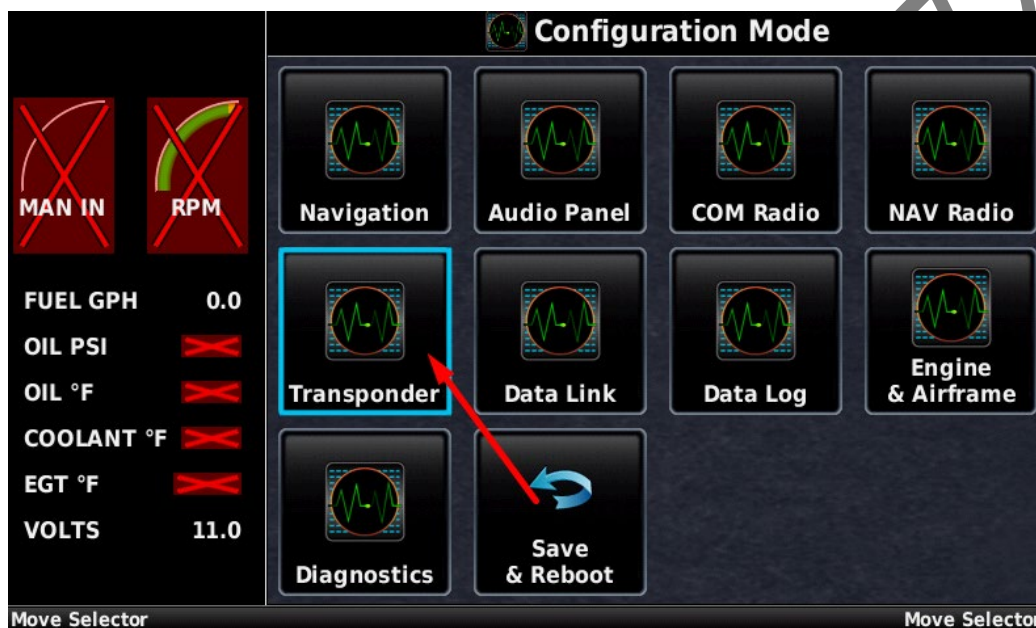


Figure 11 Transponder Configuration

18. On the right-side menu “Configuration”, scroll using swipe gestures to move the menu down. Continue until the option “Position Integrity” is shown.
 - a. See Figures 12 and 13.



2141 ICON Way, Vacaville, CA 95688 - Tel: 707.564.4000 – www.iconaircraft.com

SERVICE LETTER

SL-050923-A

Transponder Configuration

Remote Transponder

Transponder Type: GTX 45R ▼

Status

✓ GTX 45R 2.54

Configuration

Mode S Address Type: US Tail # ▼

Aircraft Registration: N915BA

Aircraft Type: Fixed Wing ▼

Select Tab

Figure 12 Set Position Integrity

Transponder Configuration

Remote Transponder

Transponder Type: GTX 45R ▼

Status

✓ GTX 45R 2.54

Configuration

Position Integrity: Auto ▼

ADS-B Transmit: Enabled ▼

Enhanced Surveillance: Enabled ▼

Scroll List Select Tab

Figure 13 Set Position Integrity 2



2141 ICON Way, Vacaville, CA 95688 - Tel: 707.564.4000 – www.iconaircraft.com

SERVICE LETTER

SL-050923-A

19. Select the drop-down menu for Position Integrity and select “IFR GPS 1e-7.”

a. See Figure 14.



Figure 14 Set IFR GPS 1e-7

20. Press the BACK button on the G3X Touch display to return to the Configuration Mode page.

21. Select “Save & Reboot.”

22. A prompt will appear; Select “Yes.”

a. See Figure 15.

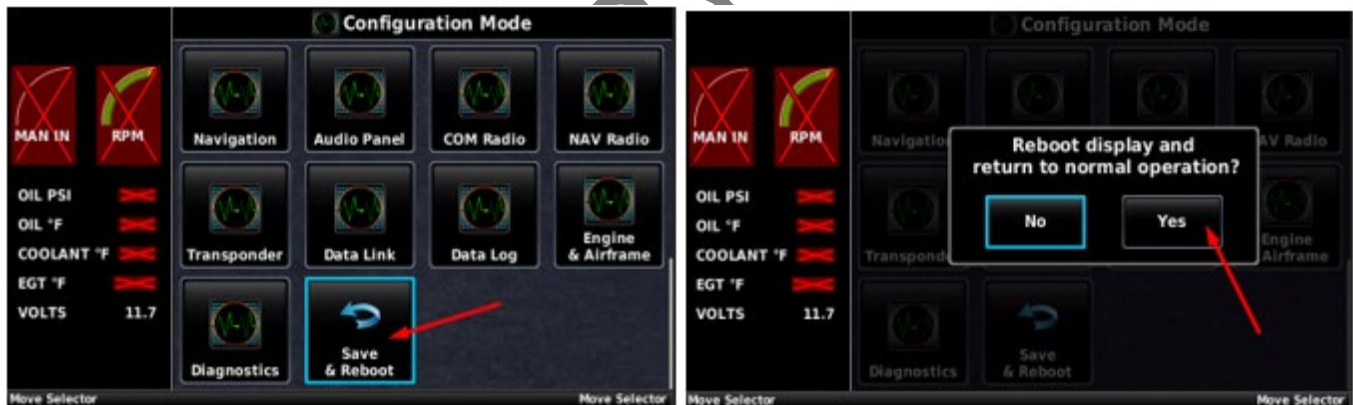


Figure 15 Reboot Display Page

23. The system will reboot.

a. Wait for the G3X system to return to the home page.

b. While rebooting, look at the bottom of the screen and ensure “Software Version 9.22” is displayed.

i. This will occur quickly and only display for a few seconds.

24. Turn off aircraft master power and remove the SD card from the G3X Touch display.



2141 ICON Way, Vacaville, CA 95688 - Tel: 707.564.4000 – www.iconaircraft.com

SERVICE LETTER

SL-050923-A

Logbook Entry

"I hereby certify that the Garmin G3X has been updated to software version 9.22 and the ICON 1.0 configuration file is confirmed to be installed in accordance with this service letter (SL-042223-B, Release of Garmin G3X Software 9.22). Potentially unclear instructions have been clarified with ICON Aircraft. No issues were observed that might hinder return to service (ref. FAA Exemption 10829B)".

If you have questions, comments, or concerns about this Service Letter and/or if you are no longer owner/operator of this aircraft, please forward this information to the present owner/operator and notify ICON Aircraft at:

ICON Aircraft
2141 ICON Way, Suite 100
Vacaville, CA 95688
(855) FLY-ICON or (707) 564-4000
support@iconaircraft.com

Please include the aircraft registration number, serial number, your name, and if known the contact information of the new owner/operator.