



2141 ICON Way, Suite 100, Vacaville, CA 95688 - Tel: 707.564.4000 – www.iconaircraft.com

SERVICE BULLETIN

SB-030525-A

ID NUMBER & REVISION: SB-030525-A
SUBJECT: Repair ELT GPS Connector Wiring
RELEASE DATE: 07 March 2025
EFFECTIVE DATE: 07 March 2025
SUPERSEDES NOTICE: SD-111324-A (upon completion of this Notice)

AIRCRAFT AFFECTED: **MAKE & MODEL:** ICON A5
SERIAL NUMBERS: 00201, 00209-00218, 00220-00224

REQUIRED ACTION: Re-pin the GPS Connector (D9157P) and re-install. This repair addresses the issue identified in *SD-111324-A ELT GPS Connector Wiring (Interim)*.

TIME OF COMPLIANCE: Next condition (100-hr/annual) inspection

REVISION HISTORY: A Initial Release

LEVEL OF CERTIFICATION	<input type="checkbox"/> Pilot/Owner	<input checked="" type="checkbox"/> A & P
REQUIRED (any level checked)	<input type="checkbox"/> LSA Repairman – Inspection	<input checked="" type="checkbox"/> Certified Repair Station
can perform task):	<input checked="" type="checkbox"/> LSA Repairman – Maintenance	<input checked="" type="checkbox"/> Manufacturer

PURPOSE:

ICON has identified that the ELT GPS Connector, D9157P, may have been pinned incorrectly. This can drain the ELT battery, which may prevent the ELT from functioning. This may be recognized by a failed self-test, a red light flashing on the remote panel, and/or audible squelching from the overhead speaker.

Previous compliance with SD-111324-A mitigated the immediate risk by disconnecting the faulty connector. The GPS connector is designed to enhance the accuracy of the ELT signal. A repair is now available to restore the function of the GPS connector.

WARRANTY INFORMATION:

- For aircraft that are currently within their warranty period (1 year from transfer of ownership), ICON will cover the contents of this Service Bulletin in its entirety as long as all aspects of the Service Bulletin are adhered to during the aircraft warranty period. Failure to adhere to the entirety of the Service Bulletin can and likely will lead to owner-incurred costs. Please note that completion of the repair does not extend the warranty period.
- Please submit an invoice for warranty reimbursement for labor upon completion, referencing Service Bulletin number SB-030525-A.
 - Repair: 1.5 Labor Hours

SERVICE BULLETIN

SB-030525-A

PARTS AND CONSUMABLES:

PART NUMBER	DESCRIPTION	QUANTITY	ALTERNATE	
			PART NUMBER	DESCRIPTION
F4TAPEBLACK	TAPE, SELF-FUSING, SILICONE, .02 IN THK, 1 IN WIDE	As Needed		
ICA011115	LABEL, HEAT SHRINK, .188	As Needed		
ICA015081	CONNECTOR, RCPT, MINI DIN, SOLDER, 4 POSN	1		

REPAIR INSTRUCTIONS:

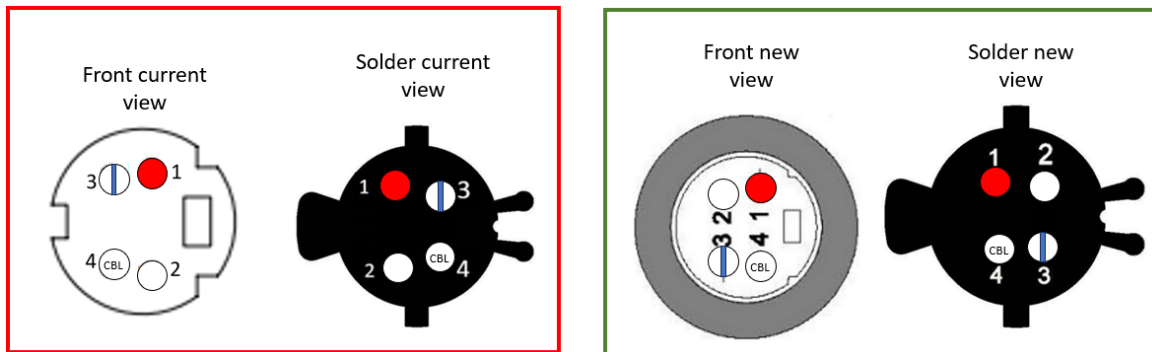


Figure 1. Incorrect Wiring (left), Correct Wiring (right)

1. Access the ELT in accordance with the Aircraft Maintenance Manual, task 100293.
2. If desired, the Instrument Panel Top may also be removed in accordance with task 100514.
3. Remove the zip tie(s) securing the GPS connector, D9157P, to the harness.
4. Remove F4 tape from D9157P if necessary. For rework purposes, there should be a 4.5" tape clearance from the front of the connector to the test wire. (Figure 2)



Figure 2

SERVICE BULLETIN**SB-030525-A**

5. As needed, cut off label D9157P. (Figure 3)



Figure 3

6. Cut off and remove connector plastic cover. (Figure 4)



Figure 4

7. Remove connector body (two pieces). (Figure 5)



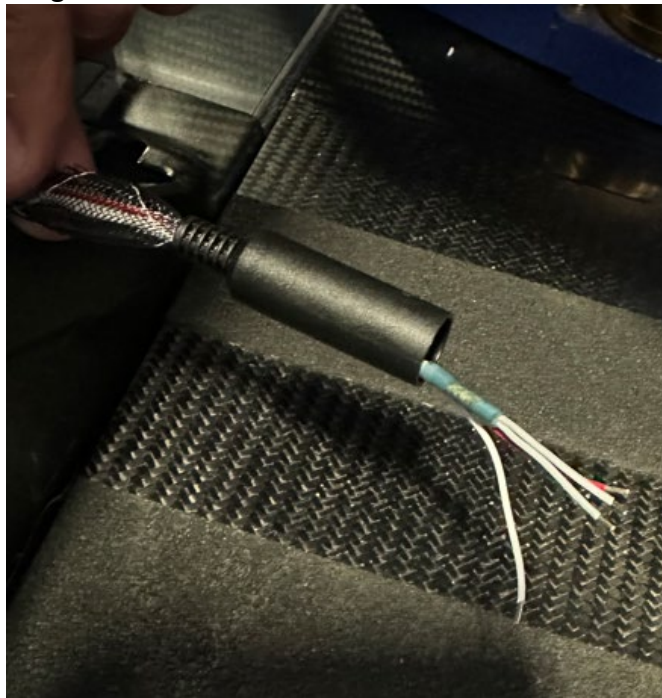
Figure 5

SERVICE BULLETIN**SB-030525-A**

8. Cut off D9157P wires flush to the connector pins and remove half-inch heat shrinks that are protecting the current solder points. (Figure 6)

*Figure 6*

9. If removed, reapply connector label "D9157P".
10. Slide new connector plastic cover into the bundle back to where F4 tape is and identify which wires come from the multiconductor and which are single wires. (Figure 7)
 - a. You must have the following:
 - i. A two-conductor cable with a WH wire and a WH/BL stripe wire.
 - ii. RD single wire.
 - iii. WH single wire.

*Figure 7*

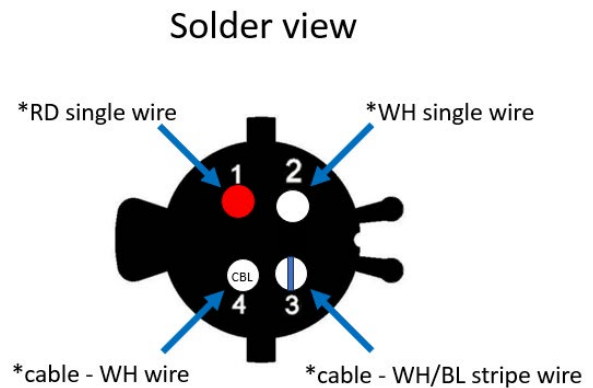
SERVICE BULLETIN

SB-030525-A

11. Strip wires 0.25" add a 1/16" heat shrink sleeve (0.5" long) per wire and solder as "Solder view" specifies below (Figure 8) with a lap solder. Then use a heat gun to shrink sleeves.



Figure 8



12. Assemble new connector body (two pieces). (Figure 9)

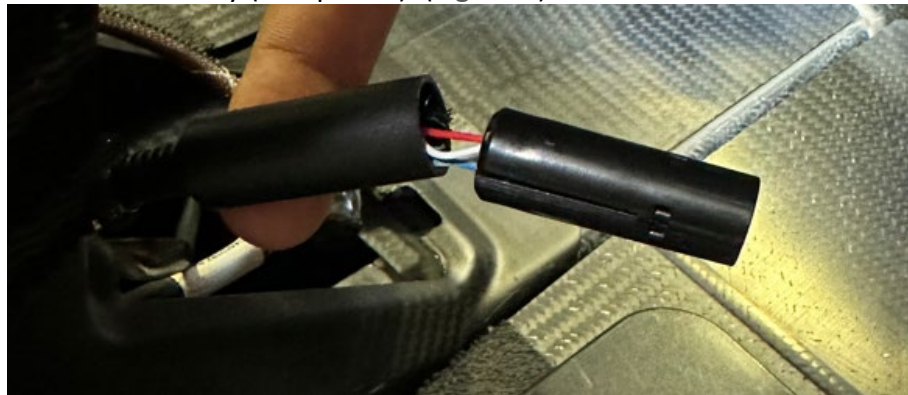


Figure 9

13. Slide the plastic cover up to the front of the connector. (Figure 10)



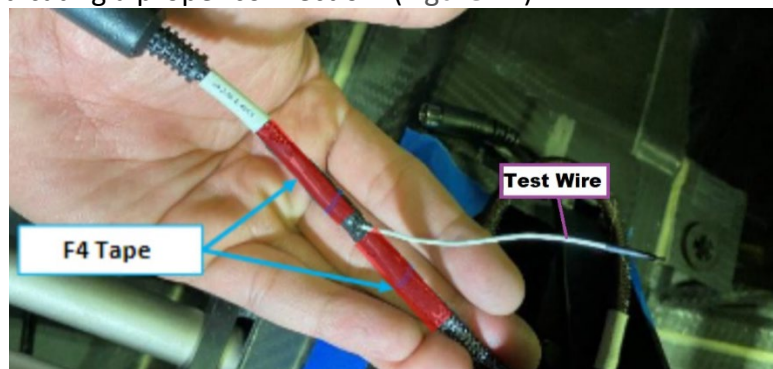
Figure 10

SERVICE BULLETIN**SB-030525-A**

14. Reapply F4Tape to connector as needed. (Figure 12)
15. Reinstall the D9157P ELT GPS Cable. (Figure 11)

*Figure 11*

16. Remove the cover on the test wire if present. With the GPS Cable installed and aircraft master power ON, measure the voltage at the test wire. Voltage may be intermittent, but should measure 0-5 V, indicating a proper connection. (Figure 12)

*Figure 12*

17. Reapply a 1/16" heat shrink sleeve over the exposed end of the test wire, then stow.
18. Reinstall the Instrument Panel Top (Aircraft Maintenance Manual task 100350) and/or the ELT Access Panel.
19. Complete the ELT self-test in accordance with the Aircraft Maintenance Manual, task 100139.
 - a. If the ELT battery is low, replace it in accordance with the Aircraft Maintenance Manual, task 100019.



2141 ICON Way, Suite 100, Vacaville, CA 95688 - Tel: 707.564.4000 – www.iconaircraft.com

SERVICE BULLETIN

SB-030525-A

Make the following logbook entry:

“The corrective action of Service Bulletin SB-030525-A (Repair ELT GPS Connector Wiring) has been complied with (ref. FAA Exemption 10829D)”.

For aircraft registered outside the U.S., omit “(ref. FAA Exemption 10829D)” as applicable.

If you have questions, comments, or concerns about this Service Bulletin and/or if you are no longer owner/operator of this aircraft, please forward this information to the present owner/operator and notify ICON Aircraft at:

ICON Aircraft
2141 ICON Way, Suite 100
Vacaville, CA 95688
(707) 564-4000
support@iconaircraft.com

Please include the aircraft registration number, serial number, your name, and if known the contact information of the new owner/operator.